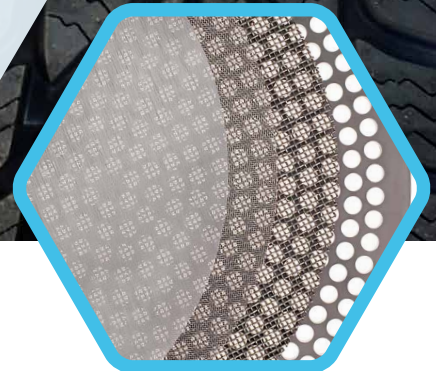


FINE MESH STRAINING

FOR TIRE COMPOUND MIXING PROCESS

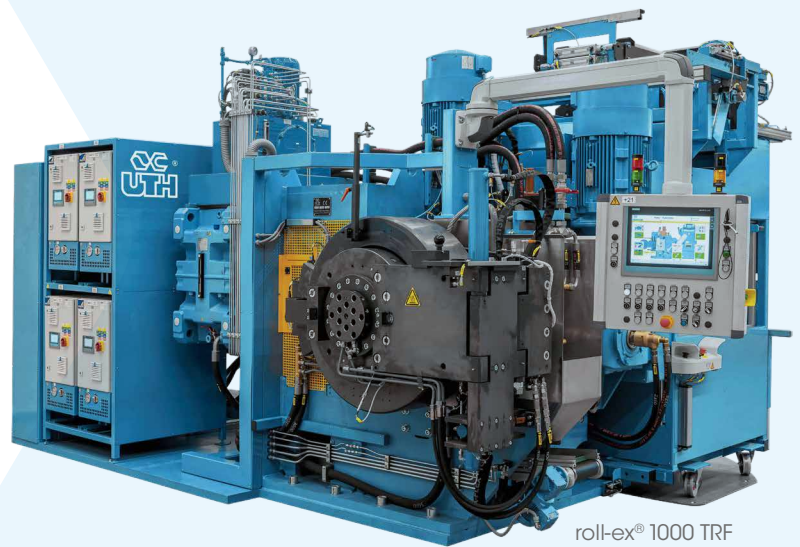
Inline Fine Mesh Straining of rubber compound for large mixing lines up to 22,000 lbs/h.

Fine Mesh Straining is a well-known process in the entire tire industry for several different production steps. Through Fine Mesh Straining the tire compound quality is improving i.e. by filtering impurities and non dispersed ingredients.



HIGH
QUALITY

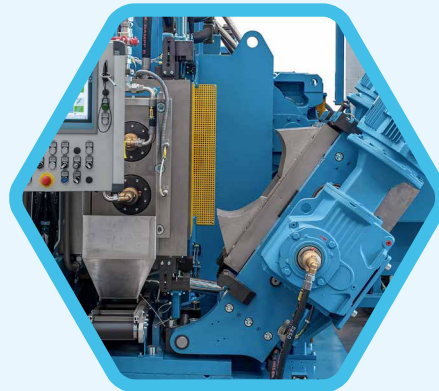
BEST
RESULTS



roll-ex® 1000 TRF



Tube die for
sheet extrusion



Opened TRF for
quick cleaning

INLINE FINE MESH STRAINING OF RUBBER COMPOUNDS FOR LARGE MIXING LINES UP TO 22,000 LBS/H

The roll-ex® 1000 TRF is setting new standards for Fine Mesh Straining of high throughputs in the rubber mixing line. The machine is based on the already well established and proven in many applications, modularly build, roll-ex® gear extruder technology. Equipped with the two-roll feeder (TRF), the finished rubber compound is fed directly from the open mill or from the twin-screw sheeter. After the Fine Mesh Straining under high pressure, through a fine screen in the specially designed strainer head, the rubber compound can be formed into any shape, e.g. strips, slabs or pellets. Due to the modular construction the roll-ex® 1000 is also combinable with a twin screw extruder instead of the TRF. The model 1000 is a proven component of the roll-ex® fine mesh straining system, our portfolio of machines, equipment, facilities, and software around the application straining of rubber compounds.

Type	Unit	roll-ex® 1000 TRF
max. output	lbs/h	22,000
max. rotor r.p.m.	1/min	25
rotor drive power	hp	428
working pressure (max.)	psi	7,250
TRF drive power	hp	2 x 50
screen-diameter	inch	20.5
dimension (L/W/H)	ft	14 / 10 / 13
weight	lbs	47,500

All figures are non-binding standard values.
Subject to technical modifications. Special models upon request.



UTH North America Inc.
9499 Old Bailes Road, Suite 216
Fort Mill, SC 29707
USA

Phone +1 (803) 558-5402
Email sales@uth-northamerica.com
www.UTH-northamerica.com