

VISUGRAPH V2

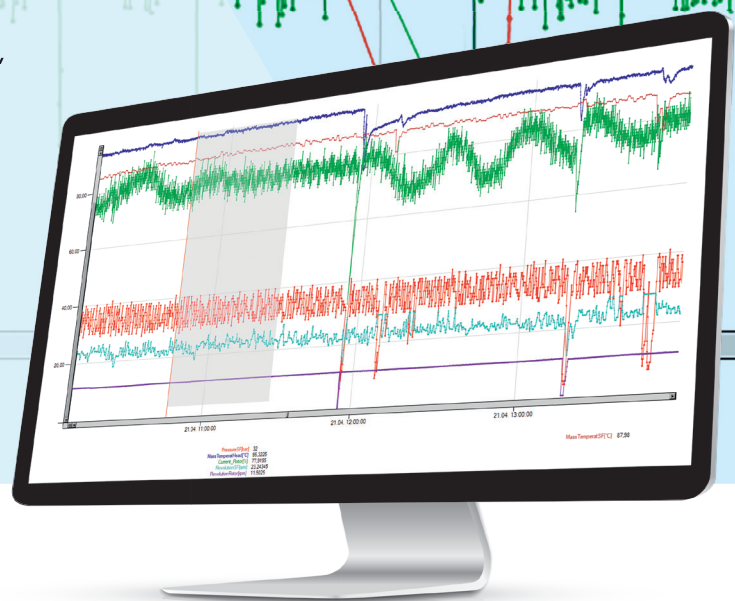
roll-ex[®] tool for optimal potential analysis

Analysis program for visualization and assessment of process/ machine/ event data and machine conditions

Simple analytic methods for production, quality control and maintenance

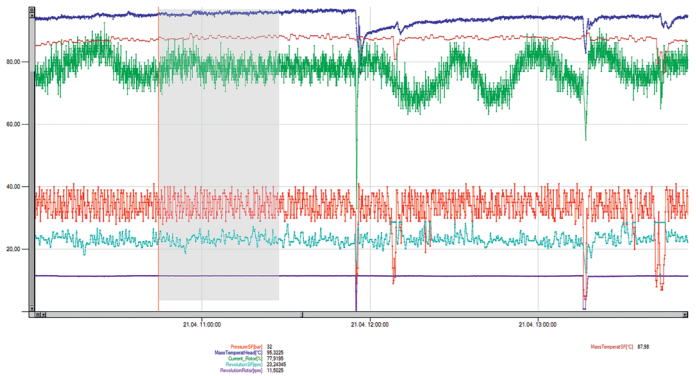
Fully tuned to the processes of roll-ex[®] machines

03.12. 05:30:00



roll-ex[®]

www.UTH-gmbh.com



Analyzing and processing data values

VisuGraph V2 can import up to 500,000 data sets for up to 275 measured values. Using the *Zoom* and *Axial Shift* functions, many different events can be easily and precisely analyzed.

ENSURING PROCESS STABILITY

The innovative roll-ex® tool VisuGraph V2 enables visualisation and analysis of captured process/ machine/ event data and machine conditions. This ensures an optimal production process which guarantees high efficiency and consistently high quality.

Fully tuned to the processes of roll-ex® machines, VisuGraph V2 identifies the process optimization potential of the system by displaying all key figures regarding performance, efficiency and quality. In this way irregularities can be determined at an early stage which then leads to higher process stability, a decrease in energy consumption, longer machine life and a reduction in maintenance costs. Unscheduled downtime can therefore also be prevented.

MAIN AREAS OF APPLICATION

- **Production:** optimization of output due to easy trouble-shooting.
- **Quality:** process compliance can be monitored and any deviations can be identified easily and without delay.
- **Maintenance:** all machine events are presented in chronological order allowing fast pinpointing of the causes of disruptions.

VISUGRAPH V2 ENABLES



Detailed display of recorded measurement data



Monitoring /reporting specific to machinery and requirements



Identification of potential for process optimization

EASY-TO-USE

No special skills are required to operate VisuGraph V2: Captured data and events can be imported easily. The channels for specific views to be displayed graphically can be freely selected. It is possible to display up to 10 process variables in a graph at the same time. For example, with just one view, trends within a certain period or relations can be visualized. Further options, such as *event selection* or *zooming within the graph*, provide detailed, comprehensive machine data for specific analyses. The *print* function enables to print or create PDF files of the graphics.

VisuGraph V2: Simple. Flexible. Efficient.



UTH GmbH
Eisenhowerstr. 7-9
36041 Fulda
Germany

Phone +49 661 9741-0
Fax +49 661 9741-30
roll-ex@UTH-gmbh.com
www.UTH-gmbh.com