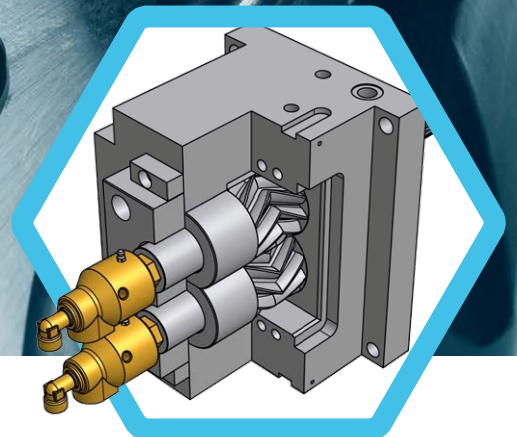


GEAR PUMP TECHNOLOGY FOR RUBBER EXTRUSION

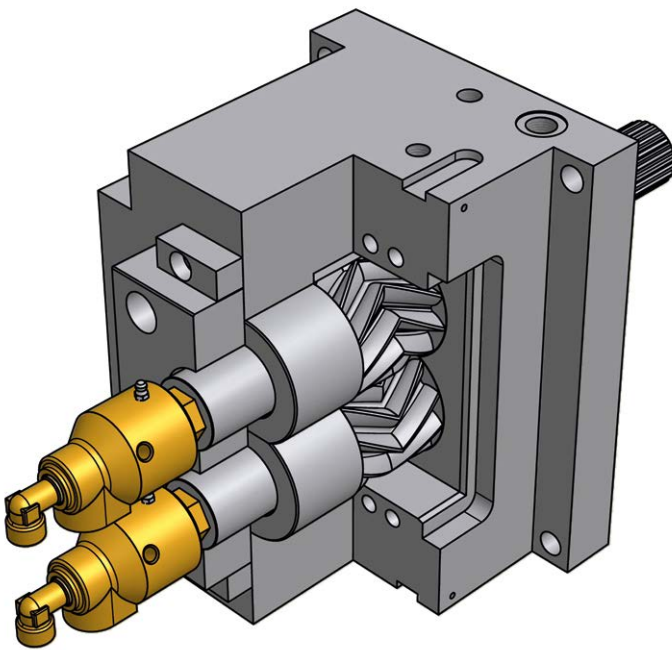


roll-ex[®]

www.UTH-gmbh.com

PRECISE AND HIGH PRESSURE EXTRUSION

WITH ROLL-EX® GEAR PUMP MODELS



ROLL-EX® GEAR PUMP TECHNOLOGY:

- patented roll-ex gear pump design
- modular set-up for individual solutions
- easy and quick to clean
- high pressure up to 800 (500) bar
- volumetric transport, nearly independent of counter pressure
- temperature remains extensively constant
- low energy demand (up to 70 % energy savings)

TEMPERATURE / PRESSURE CHARACTERISTIC

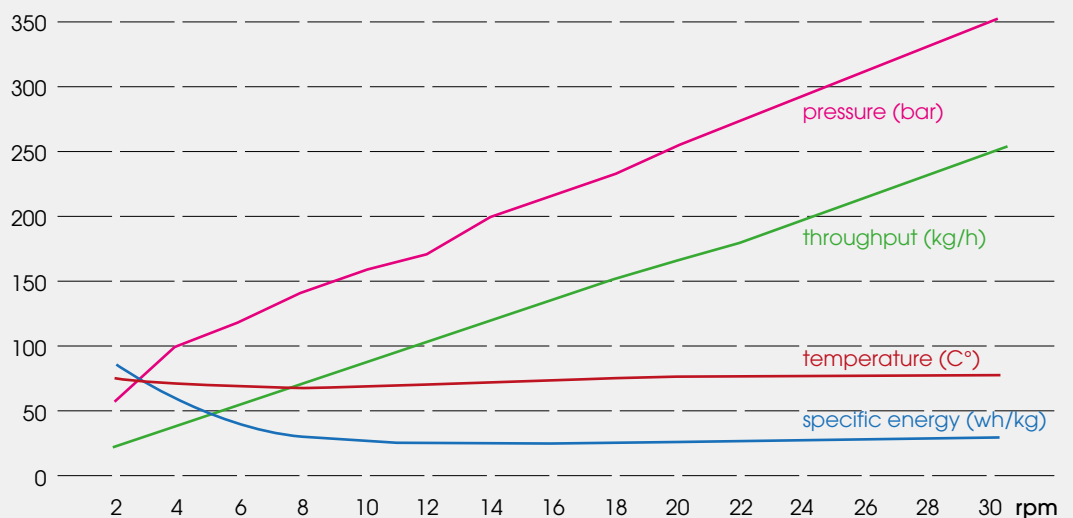


Diagram: Typical strainer test on a roll-ex® 70 with NBR 70® Shore, a screen with a mesh aperture of 0.122 mm (120 mesh / 2100 mesh per cm²) and a screen diameter of 200 mm

roll-ex®



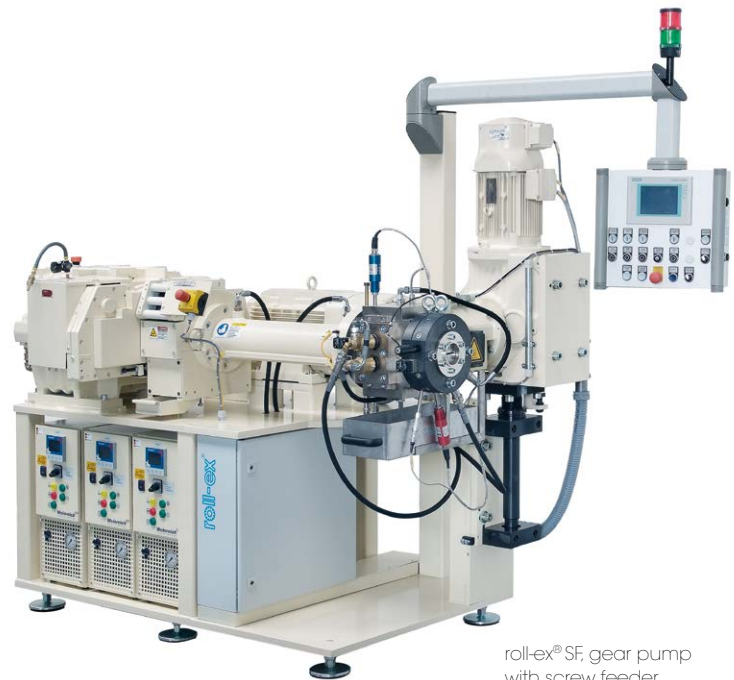
Double helical gears



Gear pump-screw feeder unit

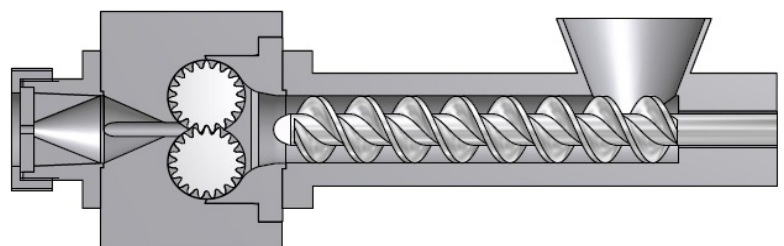
PROCESS TECHNOLOGICAL BENEFITS:

- lower cross section fluctuations of the extrudate
- quick dimension stability at start-up is reducing scrap
- decreased temperature strain of the compound since the screw extruder has to generate the feed pressure only
- very even output pressure and constant volume displacement realizing lower cross section fluctuations of the extruded profile
- due to minimal amount of space the roll-ex® system is simple to incorporate into existing production lines



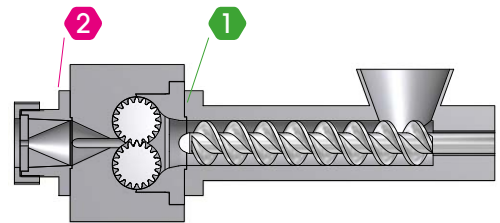
roll-ex® SF, gear pump with screw feeder

| Model | (bar) | Through-put (kg/h) |
|----------|-------|--------------------|
| 67/36 SF | 800 | 80 |
| 72/50 SF | 600 | 200 |
| 72/70 SF | 500 | 400 |
| 120 SF | 500 | 1000 |

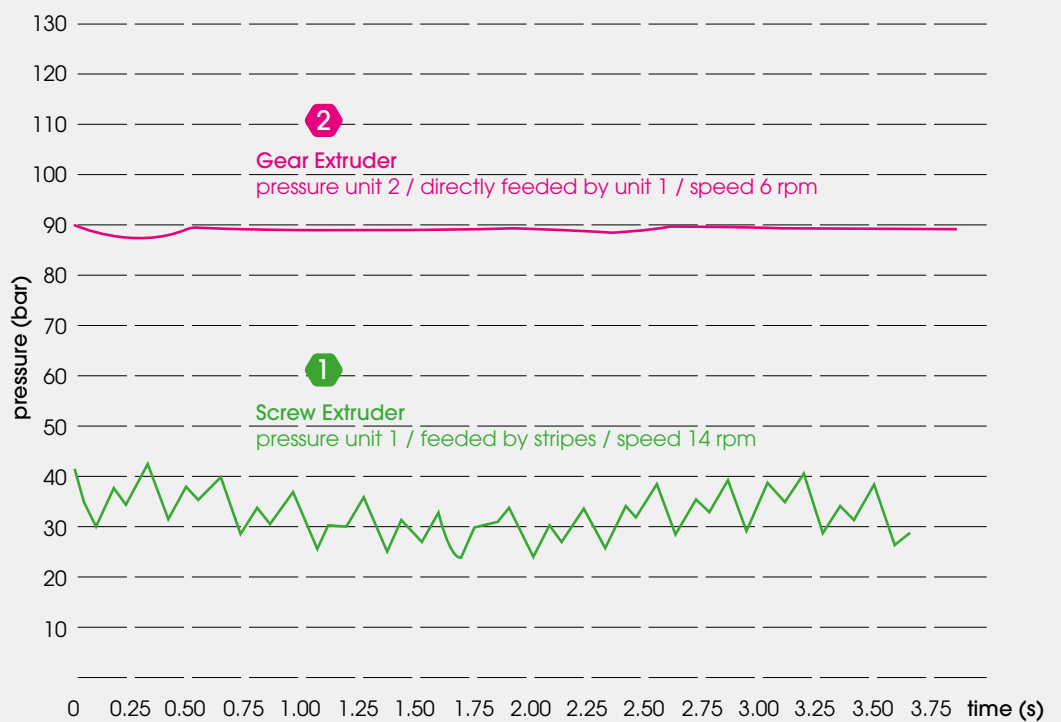




Gear pump with extrusion cross head and hydraulic quick clamping



PRESSURE
DIAGRAM
SCREW EXTRUDER /
GEARPUMP



INDIVIDUAL SOLUTIONS / AUTOMATION SYSTEMS



Operator panel

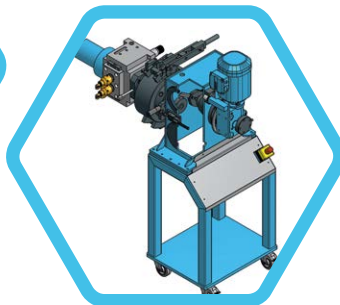


roll-ex® AO, Add-on package for retrofitting onto customers existing screw extruder

High pressure extrusion heads

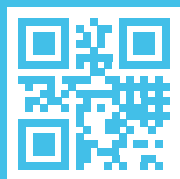


Preformer straining and preforming



Individual lines for specific products

HIGH
QUALITY



BEST
RESULTS



UTH GmbH
Eisenhowerstr. 7-9
36041 Fulda
Germany

Phone +49 661 9741-0
Fax +49 661 9741-30
roll-ex@UTH-gmbh.com
www.UTH-gmbh.com